

The first ever proposed dredging of Big Pass will create a number of critical problems and seriously restrict the use of this area by the public for tourism and recreation of all kinds

The massive size and scope of this project threatens to do serious and irreversible damage to our environment and significantly increases the exposure of our shoreline, residences and beaches to storm damage

Digging a deep, 2 mile long, 500 foot wide channel and virtually removing major portions of the sand shoals will devastate Big Pass and endanger people, real estate and natural resources

Key Facts

- The Greater Sarasota Area (Sarasota City, Lido, Bird Key, Longboat and Siesta Key) is a beautiful natural area.
- Every property owner throughout our Greater Sarasota Area wants to ensure that that our area retains its beauty, and continues to grow in value.
- Every beach in our beautiful, Greater Sarasota Area is a valuable resource.
- Everyone wants to quickly and efficiently remedy any problem or issue that might impact our beauty and value - but not at the expense of any other locale within our area.
- **One of our beautiful beach assets - Lido Beach has a problem. They need sand every 5 years as their beach continues to erode and is currently overdue for repairs.**
- The City of Sarasota has enlisted The Army Corps of Engineers to assess and develop a solution for Lido Beach in a way that reduces the frequency of sand re-nourishment.
- The Army Corps of Engineers recommends dredging Big Pass to get sand for Lido Beach (1.3 million cubic yards). The proposed plan adds two rock groins to Lido and uses Big Pass for sand every 5 years for 50 years.
- This is the ONLY solution that The Army Corps of Engineers has proposed. Previously used and alternate sand sources have been rejected or ignored.

Dredge Locations vs. City Limits



Key Issues For All of Us:

- **Impact on Tourism**

- Reduction in status and popularity. Currently \$2.8 Billion annually in Tourism Revenue (\$1.1 Billion from non residents)
- Unmitigated impacts on Fish, Mammals and Wild Life in Our Area

- **Noise, Congestion and Disruption to Big Pass Gulf Area**

- Unsightly, Noisy, Heavy Equipment in Big Pass for long time periods, repeating every 5 years over next 50 Years
- Water Fouled with triple the background level of Silt during dredging which will settle on the sea bed and bury the grasses and shellfish
- Impact on Thousands of Boaters who Use Big Pass – large area restricted for safety

- **Loss of Our Last Undisturbed Recreational Natural Resource**

- Big Pass Sand Bar is a Natural “Boat Park” for Thousands of Boaters
- Currently Used For Fishing, Boat Picnics, Swimming and Sand Recreation. Also scenic cruises to see the marine and bird life, and spectacular vista and sunsets.
- 50% increase in storm wave energy impacting Mangrove tunnels of South Lido Park

- **Storm Surge and Loss of Protection (See Next Slide Graphics)**

- Reduced Protection the Shoals Provide
- South Lido & Bird Keys and North Shore of Siesta Key in Danger of Higher Erosion and according to the Army Corps own predictions will be 60-80% higher impact in those areas.
- Increased in Rip Currents along S Lido Park, in Big Pass and associated beaches

The Case promoted by Army Corps has Much higher (+60 to +80+%) Wave Energy on S Lido, S Bird Key and N Siesta Key shores

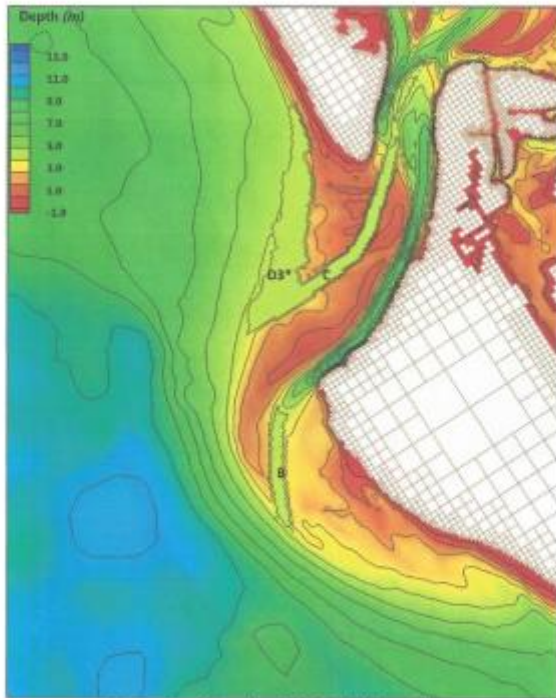


Figure 80: Alternative D3*-C-B initial condition

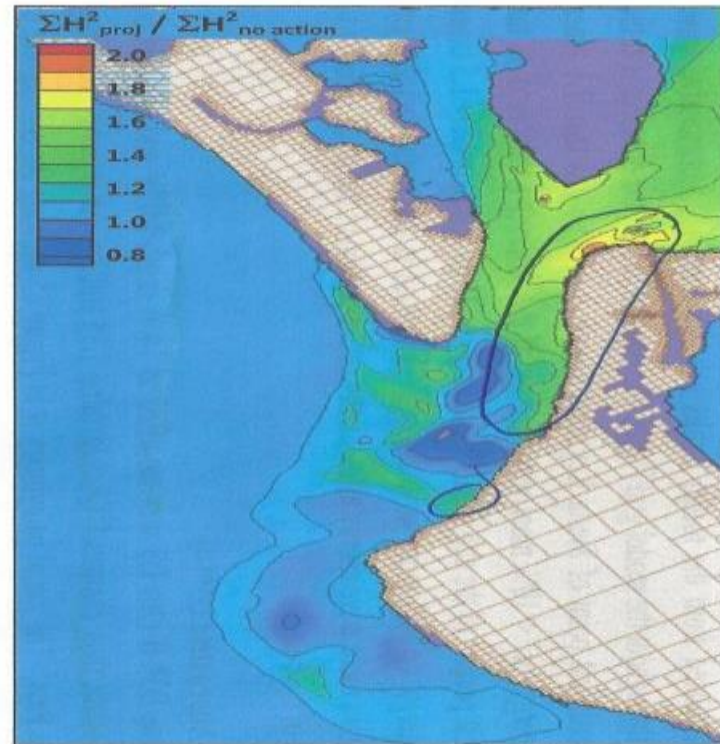


Figure 84: Cumulative Wave Energy
May 2004 - November 2004
Alternative D3*-C-B/No Action

Rejected by Corps, Alternative Case has Minimal change in Wave Energy on Lido, Bird, Siesta Key Shores

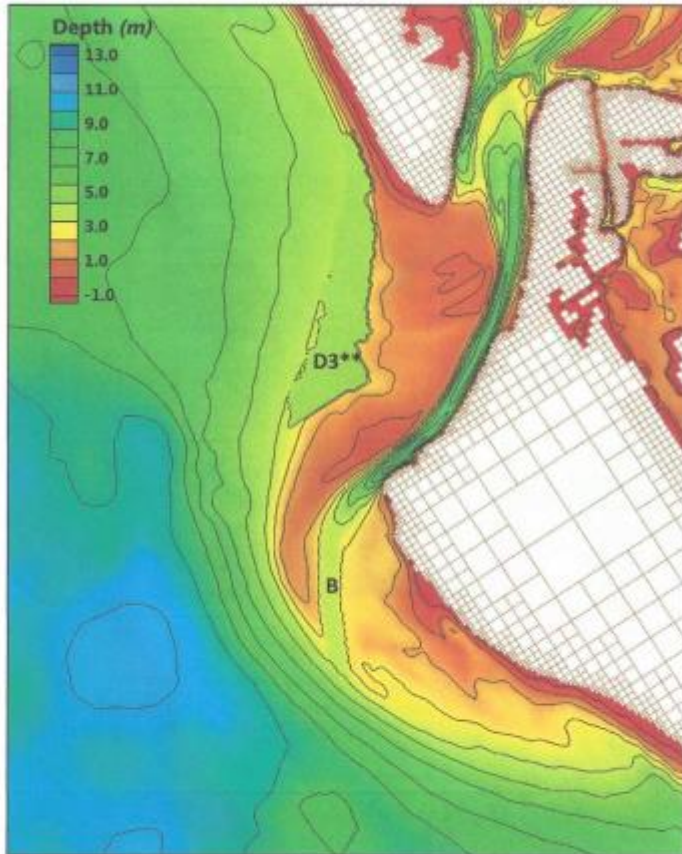


Figure 85: Alternative D3** - B initial condition

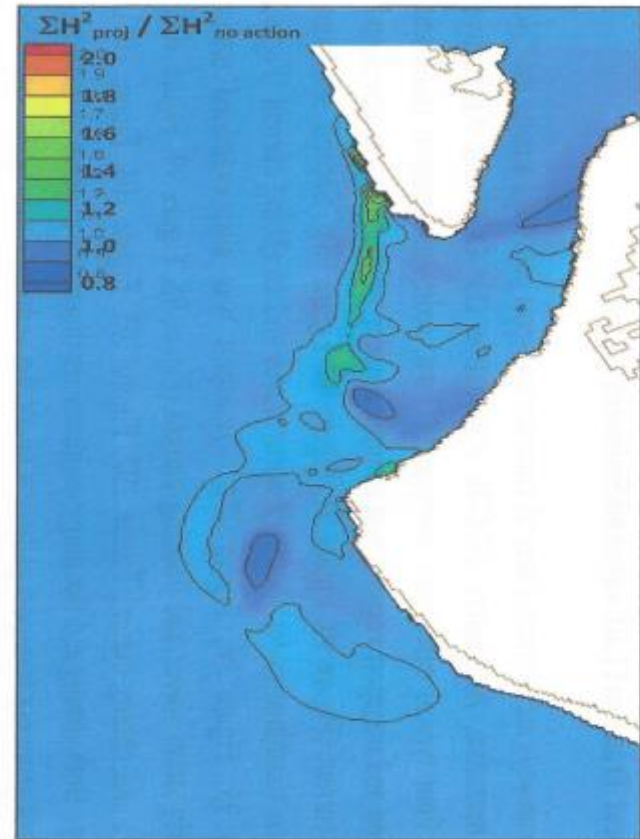


Figure 89: Cumulative Wave Energy
May 2004 - November 2004
Alternative D3** - B / No Action

Key Questions for ALL Sarasota Areas to ask:

1. Lido Beach can get sand immediately, without having to wait, in order to re-nourish their beach (New Pass, Borrow Areas Offshore, Sand Quarry Pt. Charlotte).
 - ***Why isn't Lido Key moving forward to do this? It is a known fact that Federal assistance funding will take well over a year to get into the budget and be approved.***

2. The US Army Corps of Engineers and the City of Sarasota have requested over 1.3 million cubic yards of sand from Big Pass to re-nourish Lido Beach, every 5 years.
This 1.3M is sand equivalent to the width of I-75 (including median) - 10 feet deep from University Parkway to Fruitville Rd - more than an entire Empire State Building full of sand.
 - ***Why so much sand when studies indicate only approximately 500,000 cubic yards are needed every 5 years ?***
 - ***The Army Corps' own plan only calls for this amount to be used on Lido. (200 Ft wide - 10 Ft deep – just over a mile long) What will be done with the rest ?***

3. The US Army Corps of Engineers proposes dredging a straight channel east-west approximately 500 feet wide and 14 feet deep and 2 miles long. They have stated that they expect this to be used for navigation.
 - ***Why did they reject any other alternatives ?***
 - ***Why did they reject an alternative of using the historical sand sources in New Pass and off shore ?***
 - ***Since New Pass has been closed to navigation by the Coast Guard, due to accumulation of sand shoals, doesn't it make perfect sense to dredge that area first and foremost ? Everyone wants New Pass open !***
 - ***Why have they refused to negotiate with Sarasota County whose Comprehensive Plan controls most of the proposed dredge area ?***
 - ***Why do they want to scour such a large surface area and dig a deep trench through the shoals ? That will remove all the grasses and life in the surface strata of the sea bed. Why not just dig a deep pit in one location SW of Lido which would catch the eroding sand in the future ?***
 - ***What purpose does the deep, wide channel serve relative to beach re-nourishment ?***

4. The City of Sarasota has spent over \$100,000 on their defense fund to move forward with the Army Corps of Engineers Big Pass Dredging
 - ***Is this only to keep the US Army Corps of Engineers as a partner, by giving them a project big enough to warrant providing Federal funds for 60% of the project ?***

Sarasota County Comprehensive Plan

- Env Policy 4.6.1 Prohibit dredge and fill activities in the Gulf of Mexico, bays, rivers, and streams of the County except to maintain previously dredged functional navigational channels.... All new environmentally sound ...beach nourishment projects require approval by the Board of Commissioners...***vs. Big Sarasota Pass has never been dredged, the BCC approval has not been requested yet***

DO YOU WANT THIS?



OR THIS?



The Pullen is a 150-foot-long cutterhead-pipeline hydraulic dredge deployed by the Norfolk Dredging Company for New Pass and Longboat Pass Dredging and Beach Nourishment Projects.

HELP DEFEND THE SIESTA KEY ENVIRONMENT

The Siesta Key Association has established the Siesta Key Environmental Defense Fund to educate and advocate for the protection and preservation of the environmentally sensitive structures and areas of Siesta Key.

Our current focus is to support Siesta Key Association's effort to protect Siesta Key from harm that may result from the proposed dredging of Big Sarasota Pass.

The fund is fully registered [with the IRS](#) and [Florida](#) to accept tax-deductible donations from concerned citizens.

Got a match? If you're currently employed, please check to see whether your company will match your donation. In some cases, you may need to request that SKEDF be added to their approved charities. Some companies also match donations made by retirees, so even if you're out of the workforce, see if your gift can be matched also.

If you'd like to join in supporting our efforts, please use our Donate Now page. We sincerely appreciate your support.

